

Evoluzione al silicio

Dai primi computer ad oggi

Giulio Fieramosca
Luca Mattii
Giovan Battista Rolandi



Computer

- Macchina generica programmabile
- Uso nella ricerca scientifica di alto livello

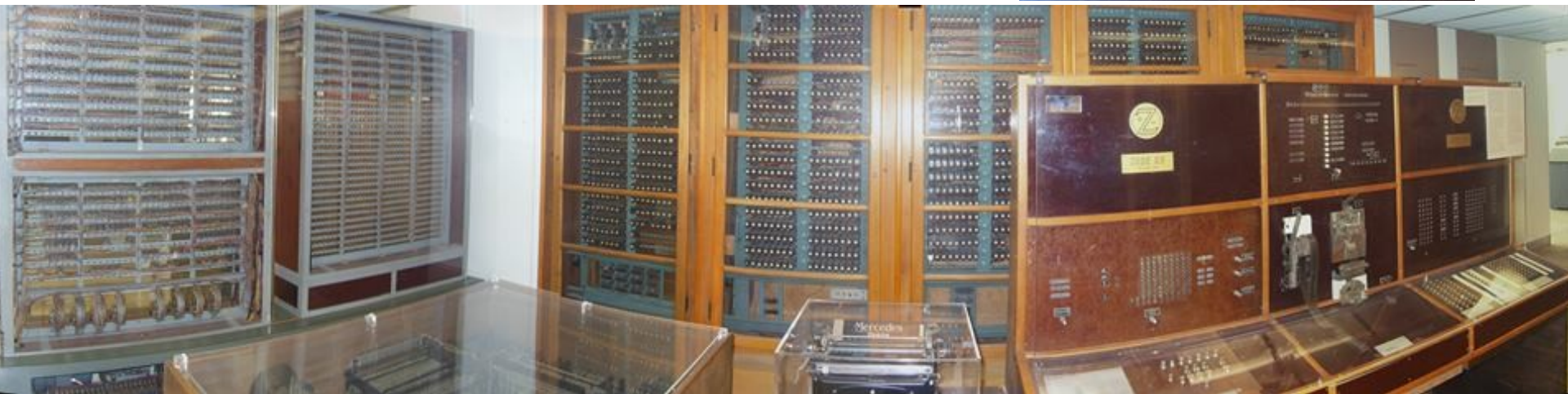


UNIVAC (1958)

Supercomputer IBM Sequoia (2012)

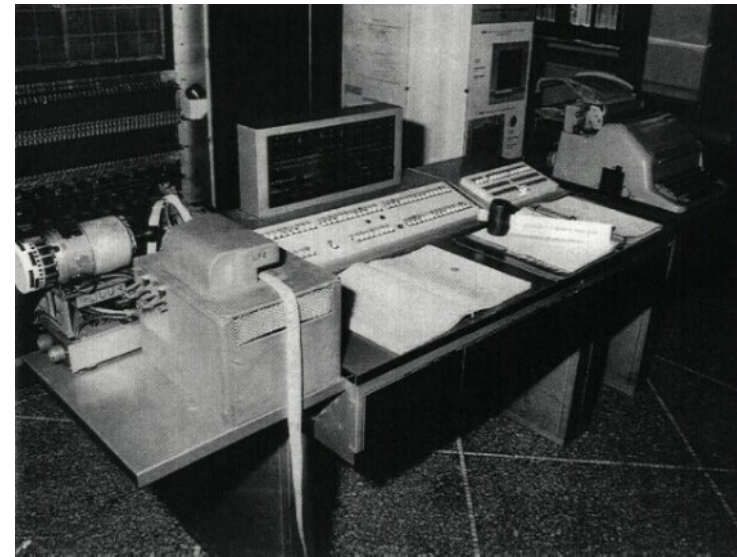
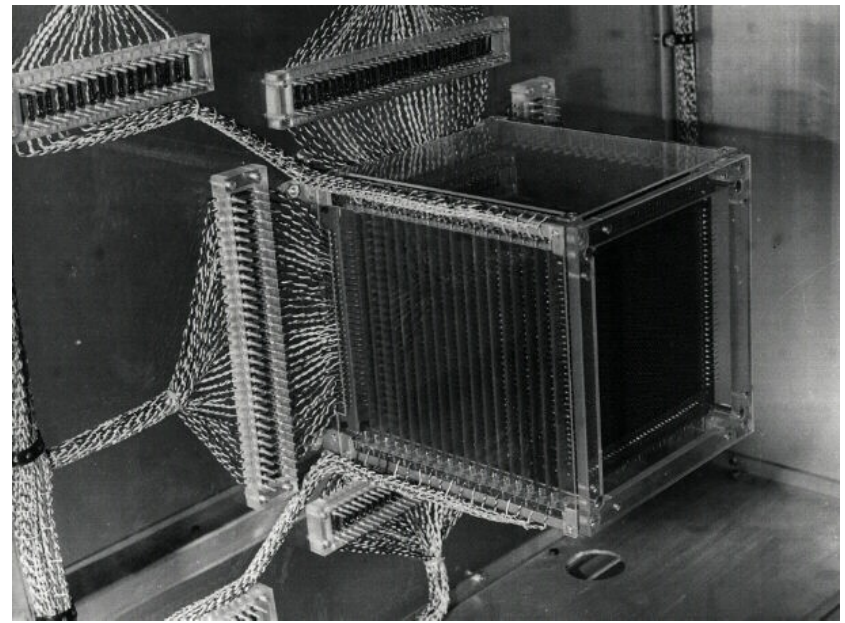
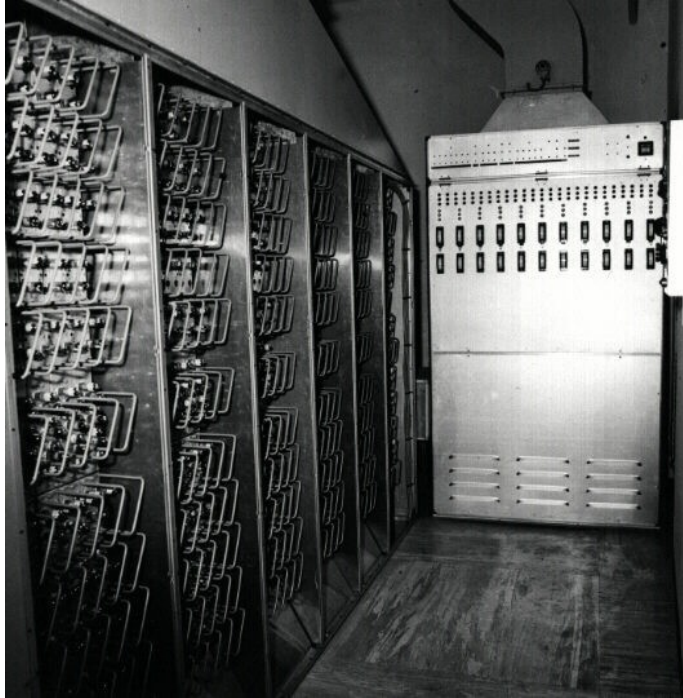


Lo ZUSE (1944)

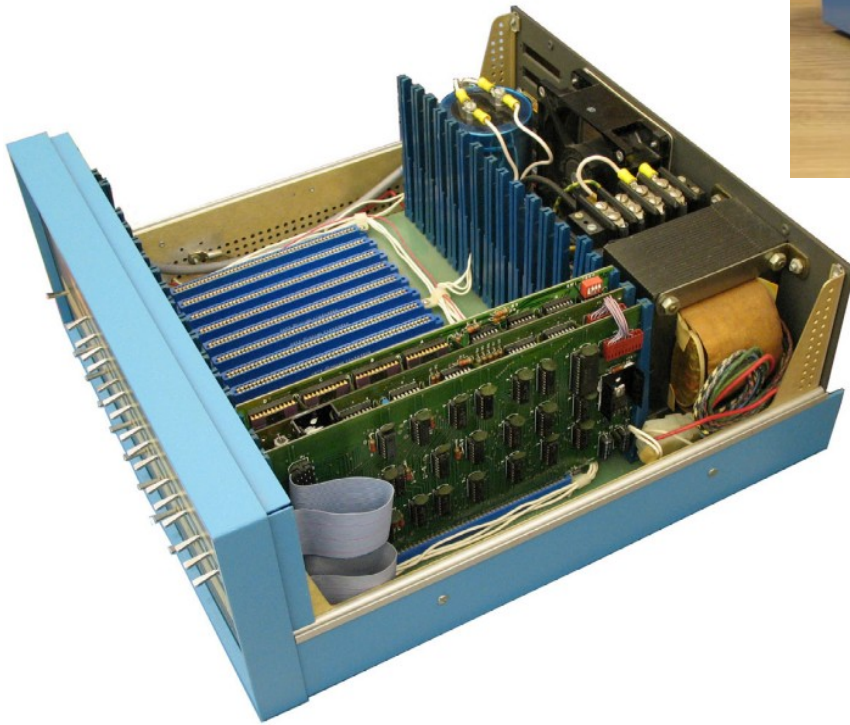


CEP (1954)

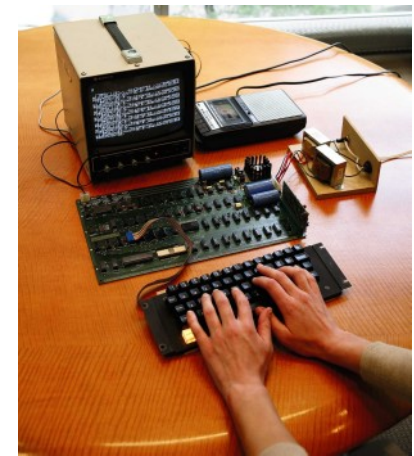
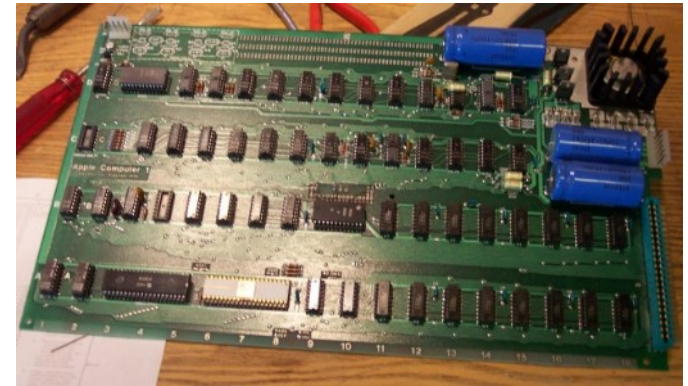
Calcolatrice Elettronica
Pisana



Dal public al personal: Altair 8800 (1975)



Dal public al personal: Apple I (1976)



Personal Computer

Macchina programmabile di utilizzo generico
dedicata all'utenza comune





Il primo computer dedicato all'utenza domestica

Caratteristiche

CPU	MOS 6502 @ 1Mhz
RAM	4KB
Input/Output	Uscita video composito 8 slot di espansione Mangianastri
Prezzo alla vendita	1.195\$



ATARI[®]2600

NonSoloProgrammazione



Caratteristiche

CPU	MOS 6507 @ 1,2Mhz
RAM	128Byte
Input/Output	Uscita audio/video RF 2 seriali
Prezzo alla vendita	199\$



commodore



64

Il computer più venduto della storia

Caratteristiche

CPU	MOS 6510 @ 1Mhz
RAM	64KB
Input/Output	Uscita video composito ed RF 2 seriali Slot cartucce Mangianastri Porta utente
Prezzo alla vendita	1.195\$



ATARI

1040ST^F

Grafica & Musica



Desk File Functions Quantize MIDI Flags Options Edit Copy

NOTATOR 3.21 (c) 1993 Lengeling/Adam

425965 ON intern 120,0000 1/16 4/4 0:04,940 33 2 4 24

BAR	ARRANGE	a	b	c	d	MUTE	STATUS	solopr3 6	CHANNEL	TRACK: 8
1	intro	1					1	drums	DMK A 10	CHANNEL A 8
7	theme	2					2	bass	SE-1 A 1	QUANTIZE 768
11	repeat	3					3	piano	TX-002 A 2	LEFT LOCATOR
15	solopart1	4					4	solo	D-110 A 3	RIGHT LOCATOR
23	solopart2	5					5	Strings	HKS-70 A 4	AUTODROP
31	solopart3	6					6	Brass	JX-0P A 5	CYCLE
39	solopart4	7					7	Percussn	TX-16W A 7	DROP
47	solopart5	8					8	Sound FX	TX-16W A 8	UNDO
55	solopart6	9					9	Perc syn	HKS-70 A 11	DELAY
63	soloend	10					10		TX-002 A 2	LOWEST
71	bridgel	11					11		TX-002 A 2	HIGHEST
77	bridge2	12					12		TX-002 A 2	GHOST OF
							13		TX-002 A 2	RHG
							14		TX-002 A 2	EDIT
							15		TX-002 A 2	DO QUANTIZE
							16		TX-002 A 2	STOP

UP BEAT CUT+ TRANPOSE

8 0 0 0 31 1 1 1

Pattern LENGTH Pattern POSITION

MIDI THRU OVERFLOW SHPTS

SOLO HIDE

DEFAULT

START CONT



ATARI

1040ST^F

Grafica & Musica



Caratteristiche

CPU

Motorola 68000 @
8Mhz

RAM

1MB

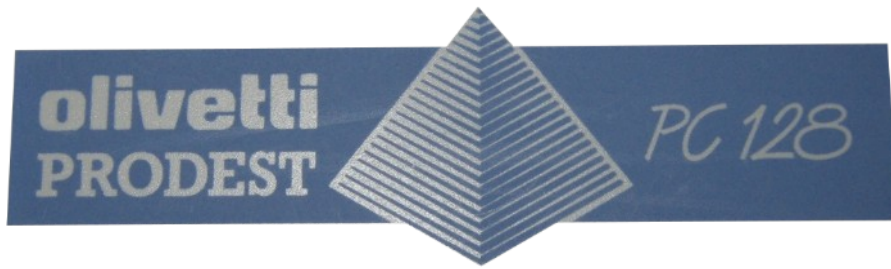
Input/Output

Video composito e RF
Slot cartuccia
In/Out MIDI
Seriale
Disco fisso
2 Seriali joystick
Floppy
In/Out audio

Prezzo alla vendita

1.295\$



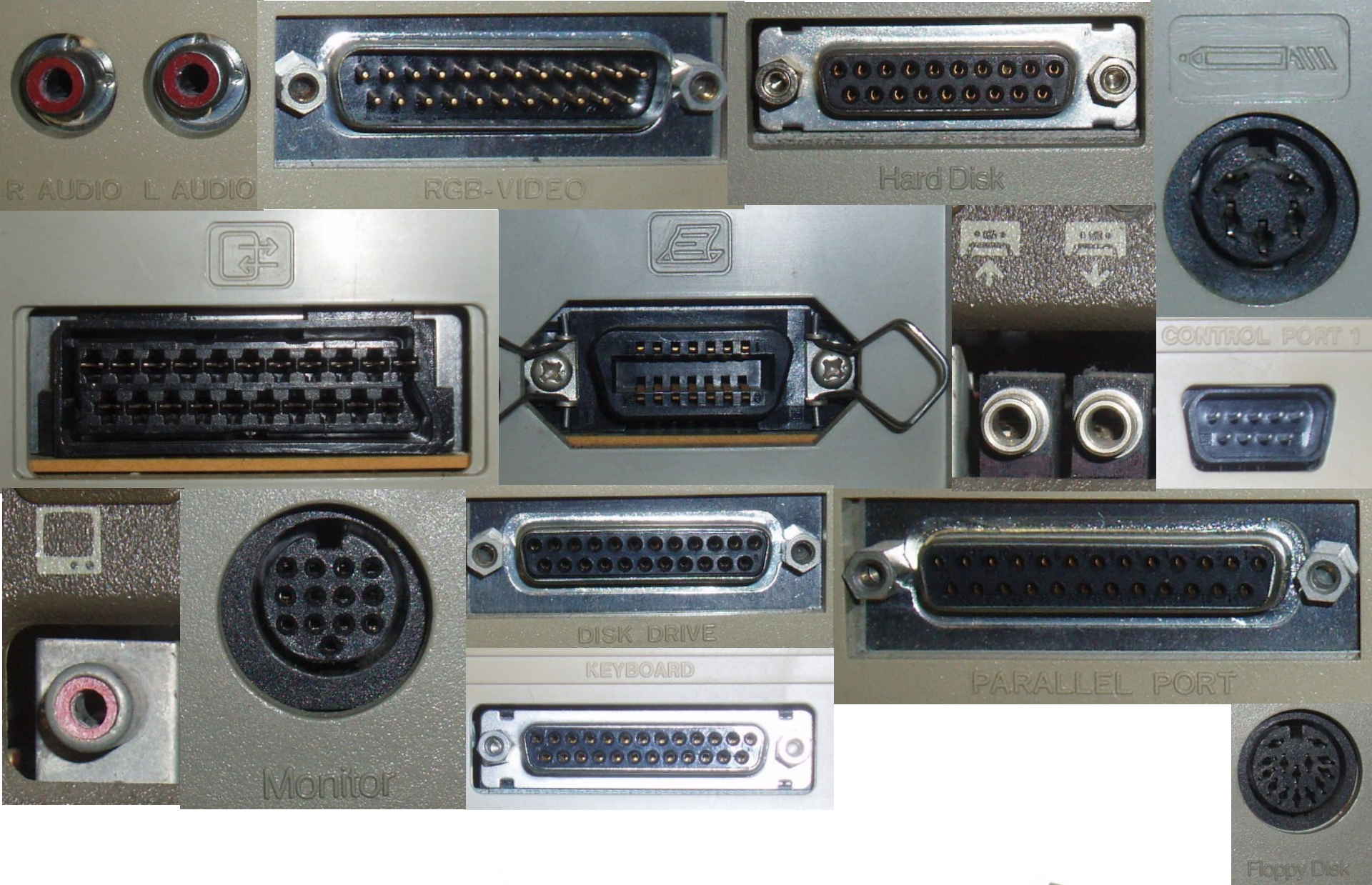


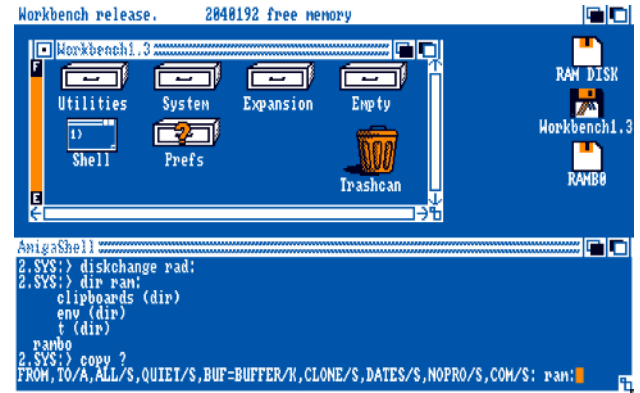
Made in Italy ... più o meno

Caratteristiche

CPU	Motorola MC 6809e @ 1MHz
RAM	128KB
Input/Output	Video composito e SCART Slot cartuccia Parallela Seriale 2 Seriali joystick In/Out audio
Prezzo alla vendita	450.000£







La standardizzazione





Palmari e portatili

Caratteristiche

CPU

NEC V30H @
7.68MHz

RAM

256kB ~ 2MB

Input/Output

Due slot per memorie
flash/a stato solido
Porta seriale



610CH1 V1N7463
3 9R06R4MM4Z10N3

Atari 2600
Olivetti PC 128
Amiga 500
Commodore 64C
Palmare Psion



Bibliografia e Sitografia

- Digital Retrò, Gordon Laing
- Basic – Enciclopedia dell'informatica dei personal computer, Armando Curcio Editore
- <http://retrocomputing.altervista.org>
- <http://wwwretrocomputing.net/>
- <http://www.bioeddie.co.uk/>
- <http://www.museo-computer.it/>
- http://www.compvter.it/index.php?title=Pagina_principale

GLG Programs

www.glgprograms.it - info@glgprograms.it

